

# For Your Dental Practice

Analog meets Digital





Simply register and order now!



Wide product range



Partner for more than 50 years



Excellent Support

## Content

<b>Bond &amp; Etch Fixing Materials</b>	<b>4-7</b>	<b>Ceramic Repair System</b>	<b>14</b>
Sebond Universal	4	ReVeneer	14
Sebond Implant & Alphaslink Implant	5		
Alphaslink Cem	5	<b>High-End Systems</b>	<b>15-18</b>
PrimeBond7, Capo Etch	6	MicroClean Cleaning System	15
Capo Bond & Capo Bond Activator	7	Function in Implantology	16
		Tizian JMA Optic by zebriis Jaw Registration System	17
<b>Composite Systems</b>	<b>7-11</b>	IMPLA	18
Capo Bulk Fill Plus	7		
Capo Natural & Capo Universal, Capo Flow	8	<b>General</b>	<b>19-20</b>
Capo Slow Flow, Capo Bulk Fill	9	Newsletter	19
NanoPaq, BLUEEDENT Power Pen cordless	10	Contact	20
Composite product family at a glance	11		
<b>Bleaching</b>	<b>12-13</b>		
Bleach'n Smile Office Bleaching	12		
Bleach'n Smile Dental Dam	13		
Bleach'n Smile After Bleaching Care	13		

Dear Partners,

Trust and confidence – aren't these two terms becoming more and more important in today's ever changing world where products and markets are continuously gaining complexity? When we ask you to trust us – what would be the reason for you to do so?

Trust us because most of our products have been developed by our own R&D and are produced in Germany. Therefore, we know exactly how they function. Our technicians are working for you to answer your questions and provide the necessary daily support.

You can count on us because our expertise and support cover both worlds – digital and analog.

Rely on us because we can look back on more than 50 years experience in the market. This gives you the certainty that you will get the necessary parts and services for your implants or digital systems also in the future.

For many decades, customers around the globe have been trusting us, our products as well as our service.

Thank you for your confidence.

With compliments,

Wolf Zientz  
Managing Director





## Bond & Etch Fixing Materials

### Sebond Universal Primer

For restorations

Sebond Universal is a single-component universal primer for strong adhesive bonding between luting materials such as Alphaslink Cem and indirect restorations made from lithium disilicate glass ceramic, zirconium dioxide, precious metals, non-precious metals, titanium, Zirconia reinforced composite, composites and PEEK. Its combination of three different methacrylates (silane methacrylate, phosphoric acid methacrylate and a sulfide methacrylate) ensures strong and longlasting adhesion to the restoration materials.

#### Your benefits:

- Universally applicable: Just one primer for almost all dental restoration materials
- Extremely economical: One thin film is enough
- Uniform reaction time of 60 seconds
- Easy to handle
- Long-lasting, secure adhesion
- Economic dispensing option
- Does not contain Bis-GMA, TEGDMA or HEMA
- No light polymerization required
- Low-viscosity material ensures efficient, rapid application
- Conveniently storable at room temperature (refrigeration not required)
- No additional equipment needed



art. no.	content
644093	Sebond Universal Primer 5 ml

### Sebond Implant & Alphaslink Implant

For restorations

This system was specially developed for bonding titanium abutments to individualized zirconium dioxide abutments and supra-constructions. It fixes supra-constructions safely on individual abutments.

#### Your benefits:

- Specially developed for bonding with a high level of safety
- The system adapts to the user
  - intraoral use = quick curing
  - use on a model = longer working range
- Excellent adhesion
- Long-term adhesion because of a specially adapted formula
- Precise, time-saving
- Because of the pasty consistency, superfluent material can easily be removed.

#### Bonds:

Zirconium dioxide, precious metals, non-precious metals, titanium, ceramics



art. no.	content
640076	Alphaslink Implant 8 g automix cartridge, 10 x mixing tips
640075	Sebond Implant 1 x 5 ml

E-module: 7.085 MPa Vickers hardness: 320 MPa  
 Bending strength: 107 MPa Compressive strength: 229 MPa

### Alphaslink Cem

For natural teeth

Alphaslink Cem is a dual-curing fixing composite for natural teeth. It was specially developed for the adhesive fixation of indirect restorations such as veneers, inlays, onlays, crowns and bridges. The material bonds restorations made of glass ceramics, zirconium dioxide, composite, Zirconia reinforced composite, precious metals, non-precious metals and titanium. Alphaslink Cem is also suited to the adhesive fixation of root pins and for building up stumps (as core build up material).

#### Your benefits:

- Outstanding bonding values on dentin and ceramics
- Excellent radiopacity (210 % Al)
- Very high compressive strength of 290 MPa
- Abrasion-resistant
- High viscosity
- Automix cartridge for easy handling
- Transparent mixing tips
- High biocompatibility, as Bis-GMA-free
- Great physical properties ensure long-term stability
- Cures safely (self-curing)
- Available in three different colors, thus highly aesthetic



E-module: 12,039 MPa  
 Bending strength: 118 MPa  
 Very high Vickers hardness: 549 MPa  
 Compressive strength: 290 MPa

	ambient temperature ca. 21 °C (ca. 69 °F)	intraoral 37 °C (98.6 °F)
curing time incl. working range	ca. 6 min.	2–3 min.

art. no.	content
639012	A2 8 g automix cartridge
639013	A3 8 g automix cartridge
639014	semi-transparent 8 g automix cartridge

## PrimeBond7 For natural teeth



### 7. generation bonding - primer and bonder all in one One material for many applications

The new PrimeBond7 is a self-etching, light-curing one-component bonding of the 7. generation. Bond filling composites safely and reliably to natural tooth structures in only one step. Quick and easy to handle with outstanding quality due to an optimally adapted formula – test it now!

#### Indications:

- Direct composite restorations on the natural tooth
- Indirect restorations made of composite or ceramics (inlays, onlays, veneers, crowns) with light-curing and dual-curing fixing composites
- Repair of fractured composite fillings

#### Your benefits:

- Outstanding bonding values
- Safe and reliable
- Quick and easy: etching, priming, bonding in only one step / can be applied evenly
- Permanent bond on enamel and dentin
- Extraordinary physical properties
- Good biocompatibility
- Gentle etching reduces the risk of hypersensitivities
- Compatible with conventional light-curing composite materials
- Choice between two techniques (self etch and selective etch)
- No refrigeration necessary

#### This is how it works:

- Primer and bonder in one: Only apply once, short polymerization time (ca. 10 sec.)
- No additional etching necessary
- Forms an homogenous adhesive layer to avoid "pooling"
- Stable material properties

Physical properties	
	Mean value
Bond strength dentin (MPa)	26,0 MPa
Bond strength enamel (MPa)	24,0 MPa
pH-value	>2

art. no.	content
232007	PrimeBond7

## Capo Etch

For natural teeth

Safe and easy etching of dentin and enamel. High stability and excellent contrast to the natural tooth ensure fast and safe application. Of course, the material can be combined with Capo Bond (page 7), Capo Universal (page 8) and Capo Bulk Fill (page 9).



art. no.	content
234013	Capo Etch Set 2 x 2 ml gel (37 %)

#### Your benefits:

- Excellent visual control because of the red coloring
- Highly stable during application, stays in place
- Thanks to the curved application tips, the material is easy to apply even in hard to reach places.

## Capo Bond & Capo Bond Activator

For natural teeth



Multifunctional, light-curing, one component ethanol-based adhesive system. Outstanding bond strength on dentin and enamel. Turn your Capo Bond adhesive system into a dual-curing adhesive system with Capo Bond Activator. This makes this system ideal in cases where light-curing is difficult and for hard to reach places.

#### Your benefits:

- Permanently high bending strength on etched dentin and etched enamel (30 MPa)
- Dual-curing when combined with Capo Bond Activator (20 MPa)
- High biocompatibility
- Compatible with all conventional light-curing composite brands
- Excellent safety due to decades of clinical experience

art. no.	content
234014	Set 5 ml Capo Bond, 1 x brush holder, 50 x disposable dental brush, 2 mixing plates
234401	Capo Bond 5 ml
234402	Capo Bond Activator 5 ml

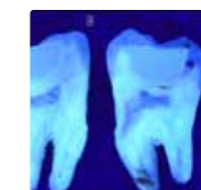
## Composites

### Capo Bulk Fill Plus

Capo Bulk Fill is a light-curing composite for posterior restorations in the direct filling technique and for the "Bulk Fill"-technique. This quick and easy method is suitable for layers with a thickness of up to 4 mm. The stable flow material adapts really well to the bottom and walls of the cavity.

#### Your benefits:

- No additional layers are necessary to cover class I cavities = time-saving
- Quick and easy processing with layer thicknesses of up to 4 mm
- Outstanding physical properties
- Minimal shrinkage provides = very safe application
- High radiopacity (210 % Al) ensures a dependable diagnosis between the filling material and the natural tooth substance
- Compatible with most bonding and composite systems
- Biocompatible: 100 % free of Bis-GMA, HEMA and TEGDMA
- Universal dentin color = natural appearance
- Easy to polish



Young's modulus<sup>1</sup>: 11.090 MPa  
3-point-strength<sup>1</sup>: 134 MPa  
Vickers hardness<sup>1</sup>: 737 MPa  
Compressive strength<sup>1</sup>: 381 MPa  
Volume shrinkage: 2,8 %  
Radiopacity: 210 % Al  
Filler content: 77 % by weight

<sup>1</sup>Source: Fraunhofer Institute for Ceramics Technologies and Systems IKTS, Dresden/Germany

color	art. no.	content
uni	232059	2 g syringe

## Capo Universal & Capo Natural

Capo Universal and Capo Natural are light-curing composites for the adhesive filling technique which are polishable to a high shine. They contain an ultra-fine, radiopaque glass filler. Thanks to this ultrafine glass filler, the resulting restorations are highly homogenous. A purposefully adapted "chameleon effect" ensures an excellent shade adjustment of the filling.

### Your benefits:

- Superior abrasion resistance combined with being antagonist-friendly
- Brilliant colors and color stability
- Compatible with most etching and bonding systems
- Ideally suited to the minimally invasive filling technique
- Easy handling and easy to polish
- Outstanding physical properties

Filler content: 75 % by weight  
 E-module: 11,173 MPa Vickers hardness: 784 MPa  
 Bending strength: 157 MPa Compressive strength: 502 MPa

Source: Fraunhofer Institute for Ceramics Technologies and Systems IKTS, Dresden/Germany



art. no.	content
232054	Capo Universal 6 g syringe
232055	Capo Natural Set, 6 syringes (A2/A3/A3,5/B2/IM/Occ)

color	4 g syringe
A1	232040
A2	232041
A3	232042
A3,5	232043
A4	232044
Incisal medium	232049
Incisal clear	232050
Incisal white	232051
Bleach 1	232052
Bleach 2	232053
B2	232045
B3	232046
C2	232047
C3	232048

## Capo Flow

Flowable micro-hybrid dental filling composite for cavity linings, for filling small defects and for fissure sealing.

### Your benefits:

- Good physical properties
- Good polishability
- Easy to use
- No dripping

E-module: 6,998 MPa Vickers hardness: 374 MPa  
 Bending strength: 134 MPa Compressive strength: 403 MPa

art. no.	content
234012	Capo Flow Set, 6 syringes (A2/A3/A3,5/A4/B3/C3)
234301	A1 Capo Flow 2 g syringe
234302	A2 Capo Flow 2 g syringe
234303	A3 Capo Flow 2 g syringe
234304	A3.5 Capo Flow 2 g syringe
234305	A4 Capo Flow 2 g syringe
234307	B2 Capo Flow 2 g syringe
234308	B3 Capo Flow 2 g syringe
234312	C3 Capo Flow 2 g syringe

## Capo Slow Flow

Capo Slow Flow is a light-curing composite for sealing fissures and for fillings after cervical caries in anterior and posterior teeth. This composite combines the easy handling of a flowable composite with the extraordinary physical properties of a paste.

### Your benefits:

- Biocompatible: 100 % free of Bis-GMA
- Extraordinary physical properties
- No additional layers necessary to cover the cavity = time-saving
- Excellent radiopacity (210 % Al), thus the filling can be easily controlled
- Compatible with most bonding and composite systems
- Chameleon effect = natural appearance
- Minimal shrinkage = very safe handling

## Capo Bulk Fill

Capo Bulk Fill is a light-curing posterior tooth composite for the direct filling therapy and for restorations using the Bulk Fill-technique. This simple and quick technique is suitable for layers with a thickness of up to 4 mm. The highly viscous material adapts very well to the bottom and walls of the cavity.

### Your benefits:

- Quick and easy to work with, for a layer thickness of up to 4 mm
- Extraordinary physical properties
- Minimal shrinkage = very safe handling
- No additional layers necessary to cover class I cavities = time-saving
- Excellent radiopacity (210 % Al), thus the filling can be easily controlled
- Compatible with most bonding and composite systems
- Biocompatible: 100 % free of Bis-GMA, HEMA and TEGDMA
- Universal dentin color = natural appearance
- Easy to polish

Pictures may vary from actual product. All technical data are mean values and may vary slightly in each delivery batch.

color	art. no. 2 g syringe*
A1	232061
A2	232062
A3	232063
A3.5	232064
B1	232065
B2	232066
B3	232067
clear	232068

\*incl. 10 application tips

Filler content: 77% by weight  
 E-module: 12,316 MPa Vickers hardness: 794 MPa  
 Bending strength: 144 MPa Compressive strength: 431 MPa

Source: Fraunhofer Institute for Ceramics Technologies and Systems IKTS, Dresden/Germany

[www.schuetz-dental.com](http://www.schuetz-dental.com)

Visit us online.



E-module<sup>1</sup>: 11,090 MPa  
 Bending strength<sup>1</sup>: 134 MPa  
 Vickers hardness<sup>1</sup>: 737 MPa  
 Compressive strength<sup>1</sup>: 381 MPa  
 Volume shrinkage: 2.8 %  
 Radiopacity: 210 % Al  
 Filler content: 77 % by weight

<sup>1</sup>Source: Fraunhofer Institute for Ceramics Technologies and Systems IKTS, Dresden/Germany

color	art. no. 2 g syringe*	art. no. 15 x 0.25 g compules
uni	232060	232111

\*incl. 10 application tips

## NanoPaq

NanoPaq is a light-curing nano composite for adhesive filling therapy with an ultrafine glass filler. Because of the ultrafine filler the results are very homogenous restorations. The specifically adjusted "chameleon effect" will help you obtain an optimal color adaptation of the filling. What's more, the fillings are easy to check because of the product's high radiopacity. All these facts make NanoPaq an excellent choice for your anterior and posterior restorations in all Black's classes.

### Your benefits:

- Easy handling
- Outstanding physical properties
- Very high compressive strength of 432 MPa
- Superior abrasion resistance combined with being antagonist-friendly
- Brilliant colors and color stability (water absorption 15.6 µg/mm<sup>2</sup>)
- Extended working time
- Compatible with most etching and bonding systems
- Ideally suited to the minimally invasive filling technique
- Easy to polish



color	art. no. 4 g syringe	art. no. 20 x 0.3 g compules
Set (A2/A3/A3,5/A4)	234500	
A1	234510	232142
A2	234511	232143
A3	234512	232144
A3.5	234513	232145
A4	234514	232146
B1	234515	
B2	234516	232147
B3	234517	
OD A2	234530	
OD B2	234533	
IW	234540	
InTr	234545	
C2	234546	
IR	234547	
InU	234548	
InBl	234550	
D3	234552	

Filler content: 83,5% by weight    Vickers hardness: 948 MPa  
 E-module: 16,575 MPa    Compressive strength: 432 MPa  
 Bending strength: 157 MPa

## BLUEDENT POWER PEN cordless\*

BLUEDENT POWER PEN cordless for the polymerization of dental composites. Its special design and low weight make BLUEDENT POWER PEN cordless easy to handle.

### Your benefits:

- Quick, reliable results
- High intensity and portability – UV and IR free
- Convenient work due to protection filter
- Cordless, low weight
- Easy handling
- Metal housing
- Replaceable battery
- Emitted wavelength: 450-490 nm



Find more information  
**ONLINE**

art. no.	Content
275100	BLUEDENT POWER PEN cordless
275101	BLUEDENT metal holder

## Composite product family at a glance

Product	Use	Indication	Accessories
PrimeBond7	Natural teeth	<ul style="list-style-type: none"> <li>• Direct composite restorations on the natural tooth</li> <li>• Indirect restorations made of composite or ceramics (inlays, onlays, veneers, crowns) with light-curing and dual-curing fixing composites</li> <li>• Repair of fractured composite fillings</li> </ul>	All Capo composites
Capo Etch	Natural teeth	<ul style="list-style-type: none"> <li>• Etching of the enamel and/or dentin in the adhesive filling technique.</li> </ul>	Capo Bond + all Capo composites + Nanopaq
Capo Bond	Natural teeth	<ul style="list-style-type: none"> <li>• Firmly bonding composites and compomers to enamel and dentin as well as to non-precious and precious metals.</li> <li>• Impregnating root canals prior to filling or cementing passive or threaded root posts.</li> <li>• Use as a primer for indirect adhesive restorations, e.g. porcelain and composite inlays, onlays, laminate veneers, crowns and bridges placed with chemically or dual-curing cement.</li> </ul>	Capo Etch + all Capo composites + Nanopaq
Capo Bulk Fill (Plus)	Natural teeth	<ul style="list-style-type: none"> <li>• Fillings with layer thicknesses to 4 mm in Black's class I cavities.</li> <li>• Base fillings/liners with layer thicknesses up to 4 mm in Black's class II cavities. For the following layers in a class II cavity, only use composites which are suited to filling Black's class II cavities.</li> <li>• Cavity lining – as a first (bottom) layer in Black's class I and II cavities</li> </ul>	Capo Etch, Capo Bond + all Capo composites + Nanopaq
Capo Flow Capo Slow Flow	Natural teeth	<ul style="list-style-type: none"> <li>• Fissure sealing</li> <li>• Extended fissure sealing on molars and premolars</li> <li>• Fillings in Black's class V cavities (cervical caries, eroded areas in roots, wedge-shaped defects)</li> <li>• Minimally invasive fillings in Black's class I, II and III</li> <li>• Restoring defects in enamel</li> <li>• Blocking out undercuts</li> <li>• Minimal adjustments to the contours and shade of the enamel</li> </ul>	Capo Etch, Capo Bond + all Capo composites + Nanopaq
Capo Natural Capo Universal NanoPaq	Natural teeth	<ul style="list-style-type: none"> <li>• Anterior and posterior restorations in Black's class I, II, III, IV, and V cavities.</li> <li>• Inlays, onlays and laminate veneers</li> <li>• Extended fissure sealing in molars and premolars</li> <li>• Stump build-up</li> <li>• Splinting loose teeth</li> <li>• Adjusting the contours and shades to improve aesthetics</li> </ul>	Capo Etch, Capo Bond + all Capo composites + Nanopaq

only  
**1**  
appointment

up to  
**10**  
shades

only  
**20**  
minutes\*



## Bleach'n Smile

### Bleach'n Smile Office Bleaching

**Indications:**

- Medical tooth bleaching
- For labial surfaces
- Bleaching of devital teeth or teeth discolored by disease or injury
- Bleaching in endodontics

**Your benefits:**

- Ideal, stable consistency
- Easy and quick application with the automix system
- Fast in-depth effect (35 % hydrogen peroxide in mixed product)
- Gentle on natural teeth (pH-neutral)
- Neutral pH-value of 7.3
- Safe storage (no separation of the mixture, no formation of bubbles with the safety clip)
- Reliable in application



art. no.	content
237050	Bleach'n Smile Automix Set: bleaching gel and activator in a 4:1 automix cartridge (5 g cartridge) + 1x Dental Dam, 1.5 g + 1x After Bleaching Care Cream, 2 ml
237051	Refill Set: 5 x 5 g bleaching gel cartridges with 35 % hydrogen peroxide

Special formula with **potassium nitrate** and **sodium fluoride** helps avoiding sensitivities!

Ask for the brochure including step-by-step instructions!

\*Minimum exposure time only 20 minutes. For even better results up to 45 minutes.

### Bleach'n Smile Dental Dam

**Indication:**

- Covering and protecting the gingiva

**Your benefits:**

- Good adhesion to the gingiva
- Only minor heat development
- Easy application
- Light-curing
- Sharp color contrast to the gingiva
- Takes less time than a rubber dam
- Excellent stability during application



art. no.	content
237020	4 x 1.5 g syringe

### Bleach'n Smile After Bleaching Care

**Indications:**

- For the aftercare of teeth after In-office bleaching

**Your benefits:**

- Caries protection through xylitol
- Reduces sensitivities after bleaching
- Reduces hypersensitivities
- Very effective due to a very special formula



art. no.	content
237052	After Bleaching Care 5 x 2 ml syringe

Pictures may vary from actual product.



## Ceramic Repair System

### ReVeneer

In most cases, the ReVeneer Repair Set saves you from having to replace crowns or bridges. This gives you security. Aesthetically pleasing, intraoral, long-lasting, safe and acid-free.

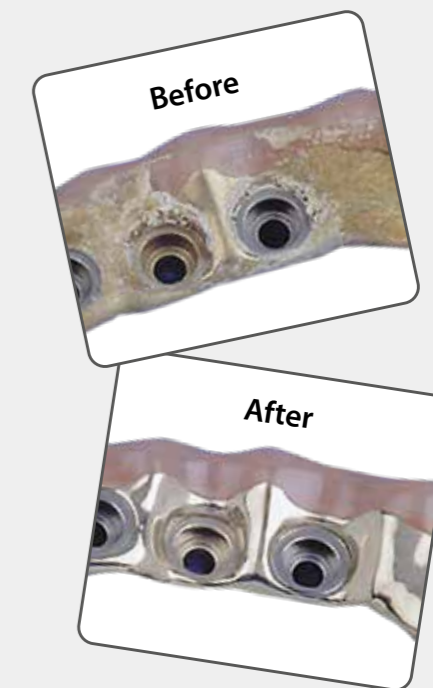


#### Your benefits:

- No acid-etching (neither hydrofluoric acid nor phosphoric acid)
- Specially adapted for intraoral use
- Outstanding adhesive bond
- Little time required
- Universal use
- Precise application because of ReVeneer Base's green color.
- The change in color from green to clear makes the curing process visible and verifiable.

art. no.	content
232200	ReVeneer Repair Set: 1 syringe (1 g) ReVeneer Base, 1 bottle (3 ml) ReVeneer Primer, 1 syringe (3 g) each Opaquer universal light and Opaquer universal dark, 6 compules composite A3.5 (0.3 g), 3 compules composite A3 (0.3 g), 2 compules composite A2 (0.3 g), 1 compule composite B2 (0.3 g), 12 application tips (0.9 x 13 mm), 1 brush holder, 6 disposable brushes
232205	ReVeneer Adhesive Set: 1 syringe (1 g) ReVeneer Base, 1 bottle (3 ml) ReVeneer Primer, 12 application tips (0.9 x 13 mm), 1 brush holder, 6 disposable brushes

Pictures may vary from actual product. All technical data are mean values and may vary slightly in each delivery batch.



## MicroClean Cleaning System

### Offer prosthesis wearers a special cleaning service.

The MicroClean cleaning system cleans dentures automatically, gently, and in a way that is appropriate for the material involved. Even the strongest contaminants such as plaque and tartar can be automatically removed by MicroClean without any difficulty. Even in difficult to reach areas.

No matter whether it is a denture that the patient has already worn or a newly made one - MicroClean cleans, polishes and pre-polishes e.g. crowns or bridges quickly and without material abrasion right into the finest inter-dental areas, fissures and telescopic tips.

#### Your benefits

- **Additional service billable**
- **Excellent automatic cleaning**
- **Especially for difficult to access areas (e.g. load distribution clasp)**
- **Top quality surface conditioning without any frictional loss! (telescopic restorations)**
- **Easy removal of fixing cement**
- **Makes ultrasonic cleaning unnecessary**
- **Significantly more efficient work, free from interruptions**

#### Accessories

art. no.	content	
678855	Cleaning fluid for EcoClean/MicroClean, 500 ml, orange (universal)	Basic equipment (1 x each)
678857	Cleaning fluid for EcoClean/MicroClean, 500 ml, green (acidic)	
678860	Info-Stand for MicroClean/EcoClean	
678849	Holding magnet complete for MicroClean	
678852	Tweezers, 18 cm for EcoClean/MicroClean	
676452	Measuring cylinder 50 ml for MicroClean	Optional
678820	Plastic container for EcoClean/MicroClean	
678864	Plastic container, small 100 ml for EcoClean/MicroClean	
678865	Needles for MicroClean, 150 g, long	
678866	Needles for MicroClean, 150 g, short	
678856	Needles for MicroClean, 200 g, long	

SCHÜTZ DENTAL





Tradition

**IMPLA meets zebris**  
Function in Implantology

Innovation

**Make an appointment with our Specialists now:  
+49 (0) 6003 814-365**



**Tizian JMA Optic by zebris**  
For safe prosthetics

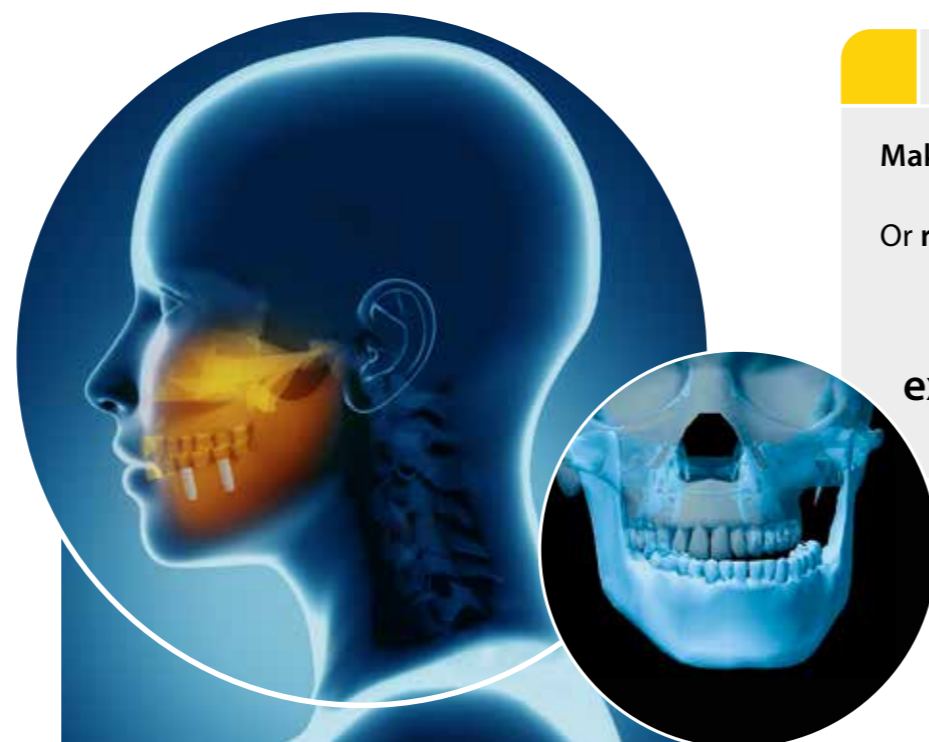
## This combination is only available at Schütz Dental

Safe implantology based upon the patient's real jaw movements. For even safer implantology that is more profitable at the same time.

Insert the implants in optimal relation to your patient's jaw movements and achieve an ideal occlusion. Amongst other factors, the service life of the implant significantly depends on the shear forces which affect the implant. With help of the Real Movement Data, the shear forces can be considered from the beginning.

### Your benefits

- Even more safety
- More precise, predictable results
- Additional billing options
- Patients' trust
- Digital image



## The new dimension of the function-oriented digital workflow

Welcome to the world of functional digital dentistry

Precise, safe, quick and economic! The Tizian JMA Optic system is based upon the latest optical sensor technology. A new dimension in functional dentistry.

**Make an appointment now!**

Make an appointment for a demo now:

Or register for a zebris training course.

**+49 (0) 6003 814-365**  
**export@schuetz-dental.de**



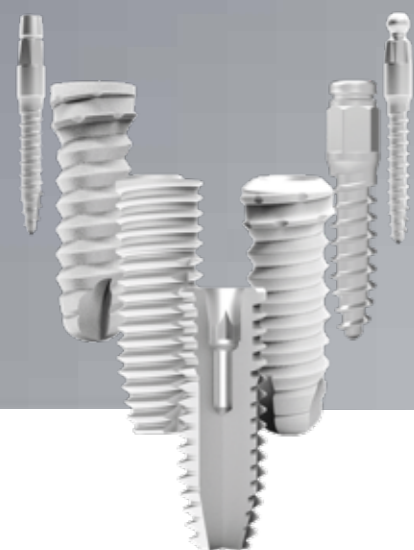
### Your benefits:

- Reliable prosthetics
- Forensic transparency
- Documentation
- Happy patients
- Digital image for your practice
- Decisive competitive advantage

Made in Germany.

Clinical experience since 1963.

Tested safety and top quality  
at a fair price.



[www.schuetz-dental.com](http://www.schuetz-dental.com)

## IMPLA Micro Retention, IMPLA Cylindrical and IMPLA Mini

### The proper implant for nearly every case.

A good implant system must not be complicated. With over 50 years of experience in dental implantology, the IMPLA system stands for safety and reliability.

The sophisticated system allows you to treat almost every indication while at the same time remaining manageable. Continuous development ensures the highest quality. The global network of consultants with famous international

DGZI speakers offers you the opportunity to attend a wide range of top class training courses. These courses are available both nationally and internationally.

### Your benefits

- Expert knowledge & safety since 1963
- 7 implant lines in only one box
- Outstanding surface purity
- Made in Germany
- Integration in Complete Digital Workflow

**Make an appointment with  
your IMPLA Specialist now:  
+49 (0) 6003 814-365**

## Schütz Dental Newsletter

Register for our newsletter and be one step ahead.

Benefit from exclusive offers and promotions for dental technology, dentistry and implantology which are only available through our newsletter. Never miss important information or events by Schütz Dental again. Always keep one decisive step ahead of your competitors.

**Please register right away under: [sdent.eu/newsletterenglish](http://sdent.eu/newsletterenglish)**



We are glad to be there for you



+49 (0) 6003 814-365



export@schuetz-dental.de



www.schuetz-dental.com

## Schütz Dental newsletter

Register now and always stay one step ahead.

Benefit from exclusive offers and promotions with our newsletters on the topics of dental technology, dentistry and implantology. Never miss important information or events from Schütz Dental again.

Register right now at: [sdent.eu/newd](https://sdent.eu/newd)

## Onlineshop

Quick and easy to order online.

Order around the clock, whenever and wherever you want. Conveniently via our Schütz Dental online store. Register now and order directly, easily and quickly online.

All information without guarantee. Errors, changes and prior sale reserved.  
The details shown are examples, we will be happy to make you a concrete offer.

[www.schuetz-dental.com](https://www.schuetz-dental.com)

Visit us online!



Schütz Dental GmbH • Dieselstr. 5-6 • 61191 Rosbach/Germany • Tel. +49 (0) 6003 814-0 • Fax +49 (0) 6003 814-906  
[www.schuetz-dental.de](https://www.schuetz-dental.de) • [info@schuetz-dental.de](mailto:info@schuetz-dental.de)

