



Tips & tricks for dental technicians

Egg shell temporaries

Aesthetic immediate restorations. Quickly, easily and individually manufactured.



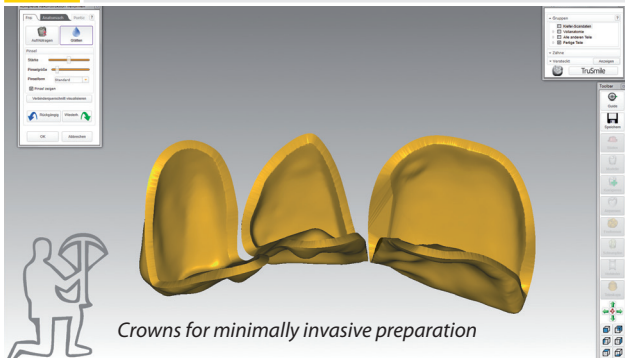
Required documents:

- Diagnostic models of upper and lower jaw
- Occlusal position
- Data of crown and bridge pontics for production

You can adapt the models using scan wax if there are any fractures, misaligned teeth, missing teeth or Bruxism.

Step by step: aesthetic immediate restorations

1 Scanning



The models are scanned using e.g. Tizian Smart-Scan.

2 Construction



Wafer-thin temporaries

The crowns and bridges are reduced inwards by 0.3-0.5 mm for producing the temporary using Tizian Creativ RT CAD "Software Module for Producing Temporaries". Then the restoration is milled with a milling machine, e.g. Tizian Cut 5 smart. Already at this stage of the process, the restoration adapts the form needed for fitting it onto the stumps prepared in later stages.

Attention:

Please note the minimum thickness of the material.

Constructing the bridge



Temporaries from below

Thanks to the wafer-thin construction of the temporary, fitting it into the patient's mouth is made easy.

Individual tooth restoration



Side view of the temporary

If the temporary interferes with the occlusion, a permanent dental prosthesis with the necessary construction will not be possible, as well. For this reason, the temporary acts as a control for the dentist. It is possible to make minor corrections in the cervical area.

3 The final result



Ready to be inserted.

Benefits

- The temporaries are milled out of Tizian PMMA Blanks. Temporaries made from PMMA blanks contain less residual monomer than temporaries that are produced with the conventional powder-and-liquid technique.
- They are plaque-resistant and offer a high stability. A natural choice of colors is also available.

Immediate benefits for your dentist customers

- 80 % of the temporaries are ready even before the preparation.
- Shorter treatment time for both dentist and patient.
- Reduced workload for the assistant, meaning a calmer process.
- Economic use of material.
- Because the situation is scanned and an insertion key is used, the exact occlusal height is determined, ensuring that a nonocclusion doesn't occur.

Wide variety of usages



Model with "transfer key" in red acrylic.

Accounting benefits

- The articulation to determine the occlusal position and the models are classed as planning models.
- The cost of producing the temporaries is filed under material costs or the final treatment which will be charged to the dentist or patient.
- Eligible costs for temporaries manufactured in the practice remain withstanding.

Contact

Heidlindemann GmbH
An den Steinbrüchen 9
35041 Marburg



Phone: +49 (0)6420-838138
E-mail: zahntechnikheidlindemann@t-online.de

Note

This article is not to be used as instructions. Please consult the user manuals for the materials and machinery mentioned above. This is the responsibility of the user.

Expert



MDT Helmut Heidlindemann

Want to add your own tips & tricks?

Simply get in touch:

Call: 06003 814-672

or email: info@schuetz-dental.de

We look forward to hearing from you.

