

PrimeBond7

PrimeBond7

Systhetics

Improve Safety and
Save Time for Your Clinic





**3 in 1: Etch, prime and bond
in just one step!**

PrimeBond7

Etchant, Primer, and Bonding Agent in One— for Direct Use in Your Patient's Mouth

PrimeBond7 is a 7th generation self-etching and light-curing single-component adhesive that enables you to attach standard filling composites (e.g. Capo Bulk Fill Plus or Capo Slow Flow) safely and reliably to natural tooth substances **in just one step**. Combine indirect restorations made of composite and ceramic (inlays, onlays, veneers, or crowns) with light-curing and dual-curing luting composites. It is also possible to repair fractured composite fillings.

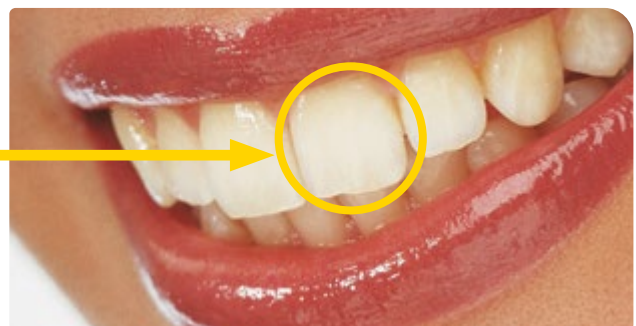
The adhesive can be used for the self-etch or selective etch technique.

How you benefit

- Extremely strong and **durable bond**
- **Quick and easy**: an etching, priming, and bonding system in a single bottle
- **Reliable and safe**: no risk of over-etching when using the self-etch technique
- Forms a **homogeneous adhesive layer** to reduce 'pooling'
- **Clean work and economical use** thanks to optimum **drop control**
- **Gentle etching** (pH value > 2) reduces the risk of hypersensitivity
- **No refrigerator storage required**
- Good biocompatibility: TEGDMA and MMA-free



Before



After

Indications

- ✓ Direct, light-curing composite restorations on the natural tooth
- ✓ Indirect restorations made of composite and ceramic (inlays, onlays, veneers, or crowns) with light-curing and dual-curing luting composites (e.g. Alphasink Cem)
- ✓ Repair of fractured composite fillings
- ✓ Compatible with standard light-curing composite materials



Economical use, strong performance

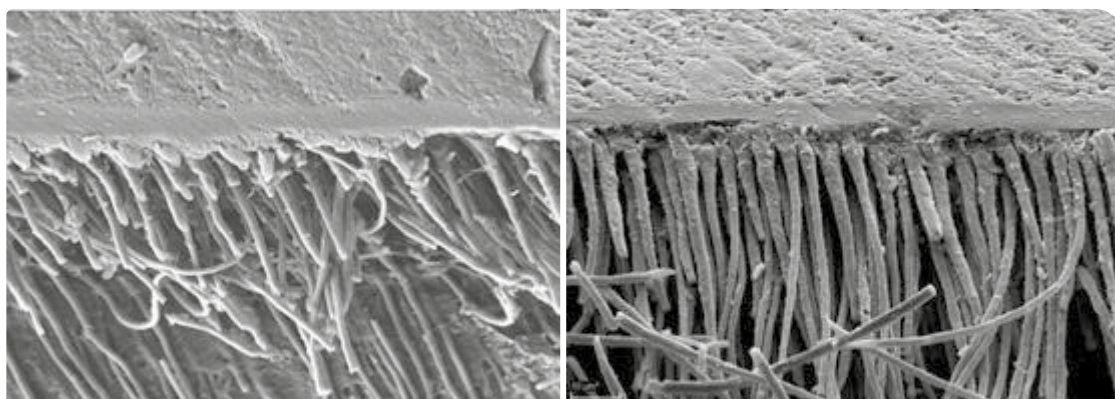
Physical Data

	Mean value
Bond strength on dentin	26.0 MPa
Bond strength on enamel	24.0 MPa
pH value	>2

Source: GDF Gesellschaft für dentale Forschung und Innovationen mbH



PrimeBond7 penetrates well into the dentinal tubules.
Day lengths of more than 50 μm were measured on the SEM images.



Order Now

PrimeBond7, 5 ml

Product no.

232007

Order
PrimeBond7
Now!

Compatible Products

Alphalink Cem



e.g. art. no. 639012

Dual-curing luting composite for natural teeth. Long-term stable, safe, and free from Bis-GMA. Available in three different colors.

Capo Bulk Fill Plus



e.g. art. no. 232112

Light-curing posterior tooth composite for direct fillings using the bulk fill technique. Adapts extremely well to cavity bases and walls.

NanoPaq



e.g. art. no. 232142

Light-curing nano composite with an ultrafine glass filler for adhesive filling therapy. Ideal for the minimally invasive technique. Available in six shades.

Other Products for Your Clinic

ReVeneer Repair Set



art. no. 232200

Ceramic repair kit for crowns and bridges. Easy, quick, and safe to use intraorally. High bond strength, no acid required.

Bleach'n Smile Automix Set



art. no. 237050

Bleaching gel for whitening discolored and devital teeth. Outstanding results thanks to the 35% hydrogen peroxide content after mixing.

pritti®multibloc ZrO₂ multicolor



e.g. art. no. 220881

49% translucence, multicolored—the material of choice for aesthetic, fully anatomical, monolithic restorations with up to three pontics.

IMPLA Implant System



e.g. art. no. 635772

Seven implant lines in just one box: have the perfect implant at hand for almost every indication—all from a single, modularly expandable surgical box.

Tizian JMA Optic by zebris



art. no. 522112

The new dimension in functional dentistry: the JMA Optic system is based on the latest optical sensor technology. Precise, safe, fast, and economical!

Intraoral-Scanner i500



art. no. 523270

The easy introduction to digital dentistry—for more benefits, efficiency, and productivity in your everyday clinical practices.

Maximilian von Kleinsorgen

Dentist

"I was one of the first to have the opportunity to test the new 7th generation adhesive PrimeBond7 and I am very satisfied. The adhesive can be used brilliantly for the self-etch or selective etch technique.

In particular, the combination with other Schütz Dental products like Alphaslink Cem and Capo Bulk Fill Plus works outstandingly well and really impressed me."

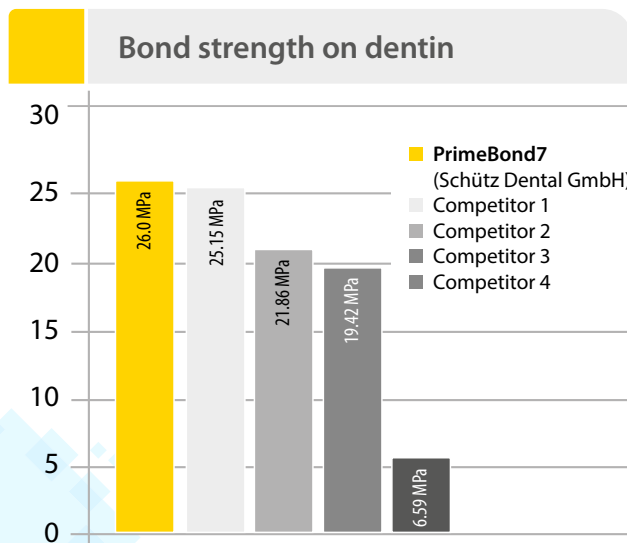


Mr. von Kleinsorgen's full user report on a complete, aesthetically flawless upper jaw restoration with PrimeBond7, Alphaslink Cem, and Tizian Blank 5.0 translucent is available at www.sdent.eu/anwenderberichte.

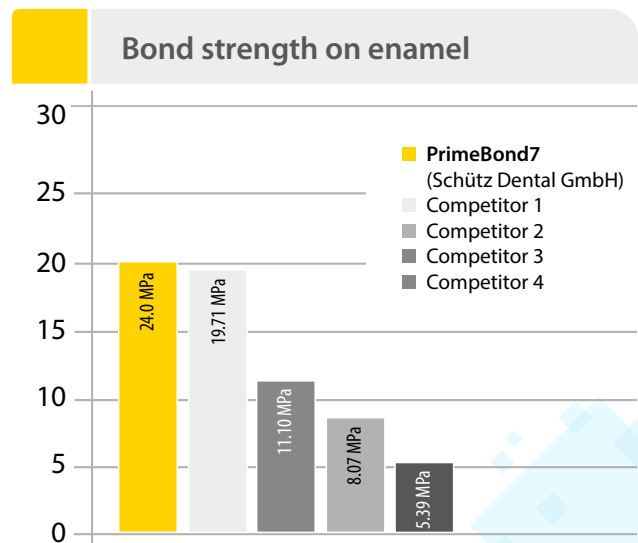
German
Quality

Scientifically Tested

A competitive comparison shows: outstanding bond strength



Source: GDF Gesellschaft für dentale Forschung und Innovationen mbH



PrimeBond7

| 4



Contact

We are here for you!

Telephone	+49 (0) 6003 814-365
Fax	+49 (0) 6003 814-907
E-mail	export@schuetz-dental.de

www.schuetz-dental.com

Visit us online!



Schütz Dental GmbH • Dieselstr. 5-6 • 61191 Rosbach/Germany • Tel. +49 (0) 6003 814-365 • Fax +49 (0) 6003 814-907
www.schuetz-dental.com • export@schuetz-dental.de